

MINUTES OF THE REGULAR MEETING OF THE
 CLAIRE GEMPP DAVIDSON MEMORIAL CONSERVATION COMMISSION
 OF THE CITY OF SUNSET HILLS, MISSOURI
 HELD ON TUESDAY, MAY 21, 2019

BE IT REMEMBERED that the Claire Gempp Davidson Memorial Conservation Commission of the City of Sunset Hills, Missouri and Lindbergh School District met at Claire Gempp Davidson Memorial Conservation Area, 9225 Sappington Rd., in the City of Sunset Hills, Missouri on Tuesday, May 21, 2019. The meeting convened at 6:00 p.m.

ROLL CALL

Present:	Jim Koeger	-Chairman
	Jan Hoffmann	-Member
	Jennifer Lages	-Member
	Tamie Yegge	-Support
	Robyn Parker	-Support
Others present:	Herb Pyne	-Support
	Gerald Brown	-Support
	Bill Hoss	-Guest
Absent	Mike Strattmann	-Member
	Sherri Schmidt	-Member

APPROVAL OF THE MINUTES

Copies of the Minutes of the January, 2019 meeting was distributed to the members for their review. Ms. Lages made a motion to approve the Minutes. Ms. Hoffmann seconded the motion, and it was unanimously approved.

OLD BUSINESS

-Restroom

Mr. Brown reported that the restroom is installed; he suggested the surrounding area of the restroom by:

Removing two trees (one directly behind, cut and leave as a stump), (other tree leave approximately 12 -15' high; place a 8 -10' radius of mulch around the restroom, plant one red bud on each side and remaining area with wildflowers. Ms. Hoffmann made a motion to approve the proposal. Ms. Lages seconded the motion, and it was unanimously approved.

Ms. Hoffmann asked who would be maintaining the restroom and Mr. Brown stated that his staff would maintain.

-Bench Location

Mr. Brown proposed after discussion with Ms. Schmidt to cut about a 8' radius around tree closest to gate entrance to shorten up the front entrance planting bed, and place the bench in the newly created area around the tree.

NEW BUSINESS

General Discussion:

Mr. Brown provided a brief report from Ms. Schmidt:

-Ms. Schmidt planted 3 butterfly milkweed and 2 purple milkweeds on 5/13/19, the (5) swamp milkweeds planted in the Fall do not appear to have survived. Would like to add Swamp milkweed plants to the area. She planted (3) Rose Verbena plants on 5/13/19, would like to add Bee Balm and blazing Stars.

She would like to add signs near the plants or possibly have a composite sign at the front of the unmowed area showing information on the plants.

Ms. Yegge informed the committee that if we cut the prairie down a 1/3 it would help assist with the weeds. Also to remove (5) seedling trees that are growing in the area.

Ms. Schmidt would like to add (2) blue bird houses to the area, but the committee did not discuss due to storm and will discuss at next meeting. Ms. Schmidt would also like to add additional plants to attract birds but due to storm coming in, the committee did not get to discuss.

Mr. Brown provided a brief maintenance update:

-Contractor being contacted to remove bittersweet and honeysuckle from areas 1, 2, 3, 4, and 6. Mr. Brown asked if we could remove from area 5 (educational area), Ms. Lages will asked teachers to see if they are willing to maintain area 5, if not the city will add to invasive species area removal plan.

-Mr. Brown requested that we design and construct tree identification signs for approximately 30 trees at a cost not to exceed \$900. Ms. Yegge is going to check on status of what tree signage example they currently have and send over to Mr. Brown. Ms. Hoffmann made a motion to approve and Ms. Lages seconded and it was unanimously approved.

-Mr. Brown provided a brief report that 57 understory trees were planted on the property per an Eagle Scout Project. Trees included were Paw Paw, Silky Dogwood, Grey Dogwood, button bush, hazelnut, sumac, indigo, and holly's.

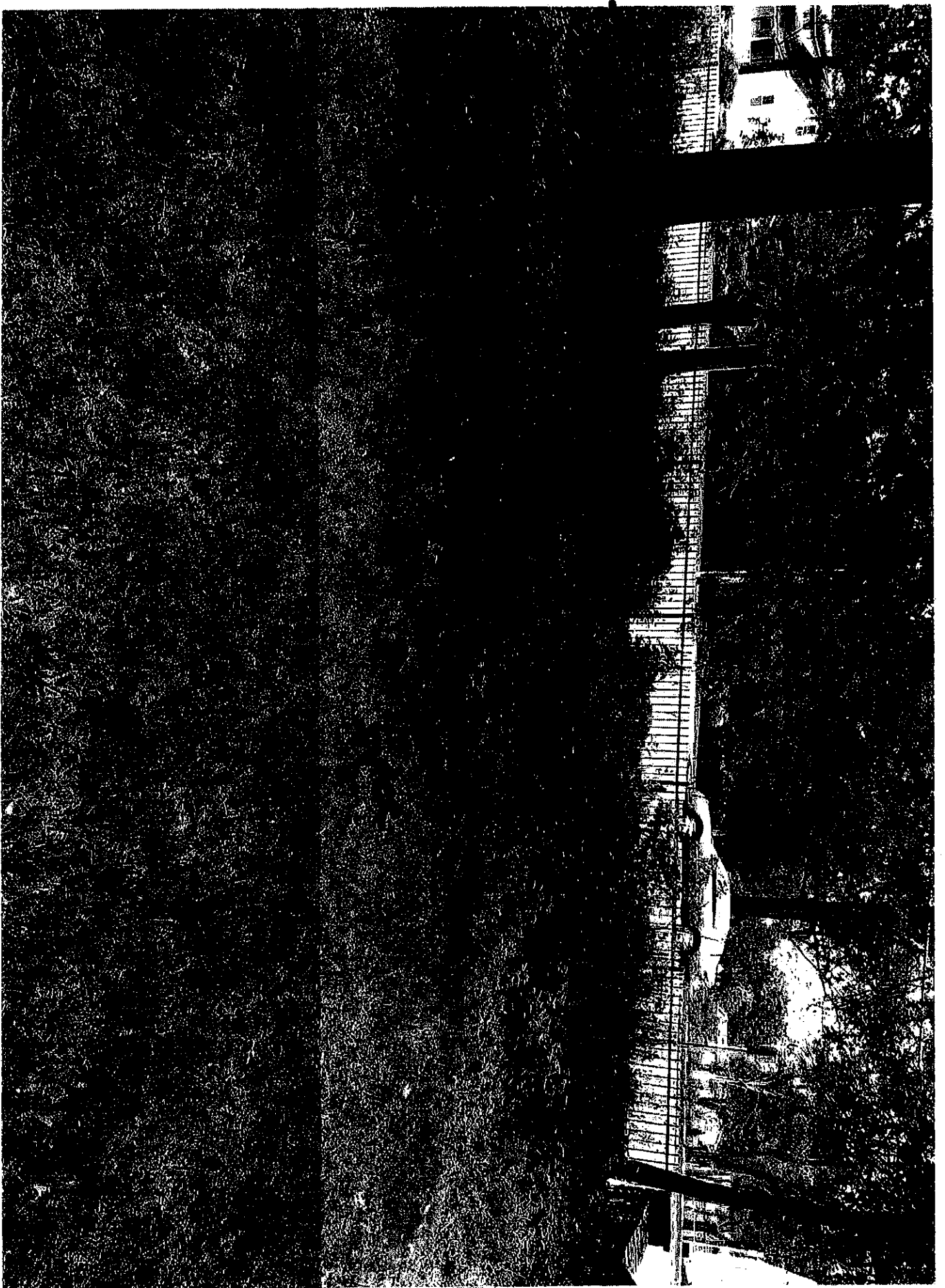
NEXT MEETING

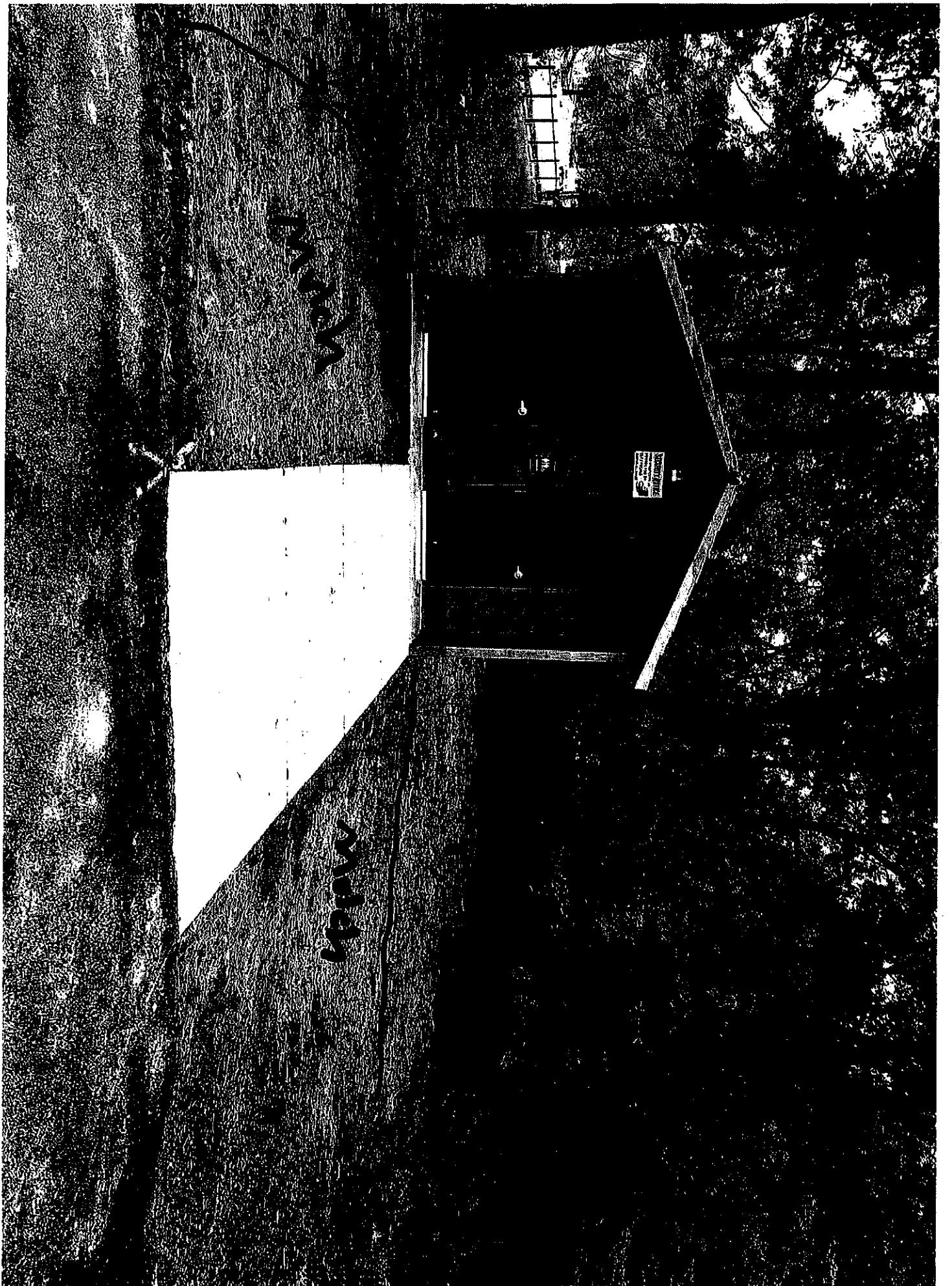
The next meeting will be August 5 @ 6:00pm at Sunset Hills Community Center.

ADJOURNMENT

Ms. Lages made a motion to adjourn the meeting at 6:32p.m. Ms. Hoffmann seconded the motion, and it was unanimously approved.

Minutes recorded by
Gerald Brown
Director of Parks & Recreation

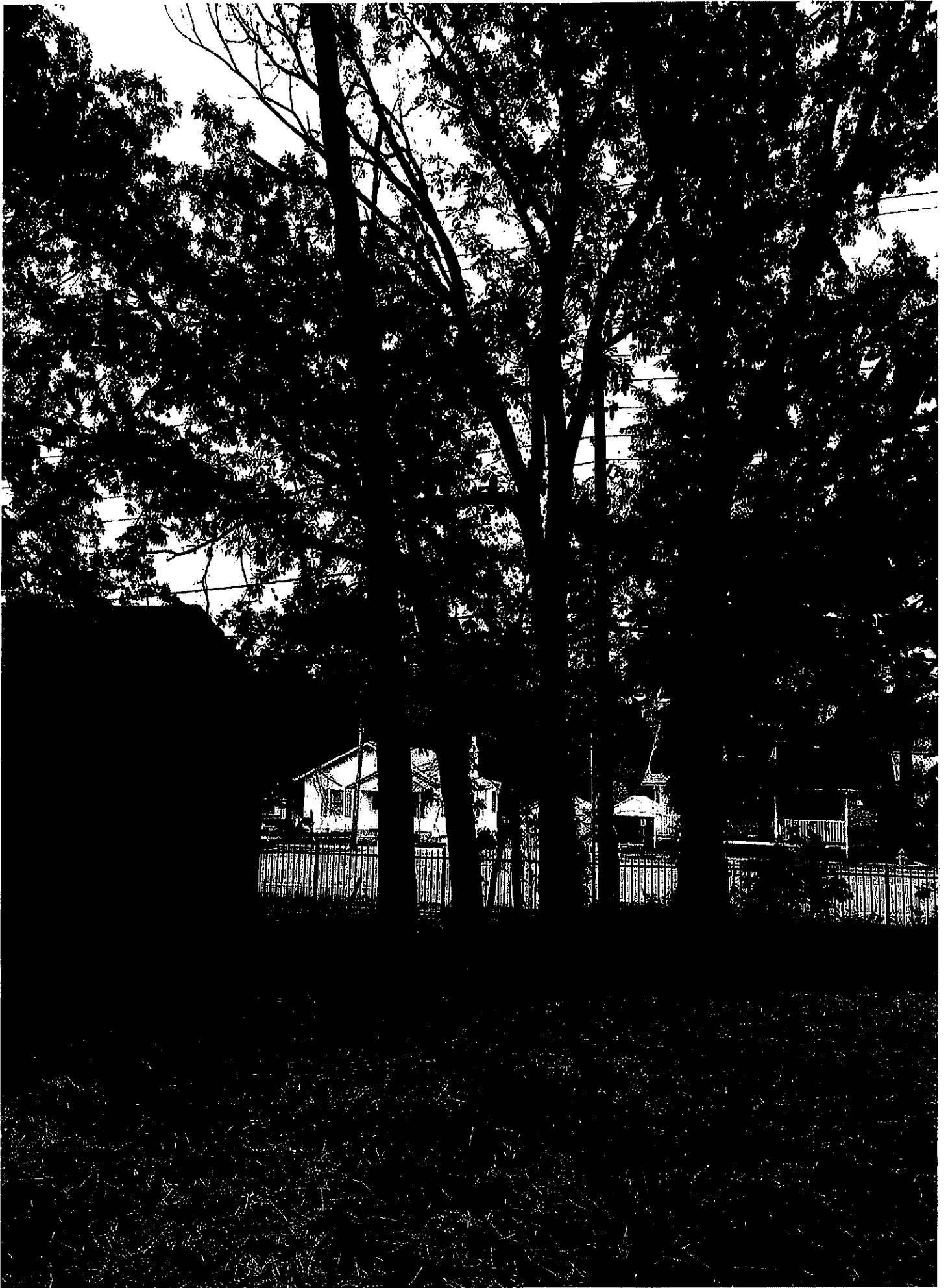




WILSON

WILSON

WILSON





5 1/2
White Oak
Quercus alba

Oak with heavy,
wide-spreading branches

Wildlife uses
Favored acorns of
squirrels, other wildlife

Wood products
Lumber, barrels, most
important U.S. hardwood
70-100 ft. tall

3 1/2

Plant List for Claire Gempp Davidson Conservation Area Front Gate Planting Project

Plant Common Name	Plant Scientific Name	Number on Map	Location
Trees identified 5/30/18			
American Elm	Ulmus Americana	14	Section 12
American Holly	Ilex opaca	12	Section 11
Bald Cypress	Taxodium distichum	9	Pond
Black Cherry	Prunus serotina	13	Section 10
Black Locust	Robinia psuedoacacia	23	Section 11 Prairie edge
Black/Shingle Oak	Quercus hybrid	7	Pond
Black Walnut	Juglans nigra	6	Section 2 across from White Oak
Bur Oak	Quercus macrocarpa	4	Section 17 by Chimney Swift Tower
Chinkapin Oak	Quercus muehlenbergii	21	Section 17 near shed
Common Hackberry	Celtis occidentalis	?	Section 15 across from grassland
Common Persimmon	Diospyros virginiana	2	Section 1
Eastern Redbud	Cercis Canadensis	17	Section 4 by Grass Commons
Eastern Redcedar	Juniperus virginiana	10	Section 13
Northern Catalpa	Catalpa speciosa	20	Section 2 near shed
Post Oak	Quercus stellate	24	Section 15
Red Mulberry	Morus rubra	19	Section 17 by Chimney Swift tower
River Birch	Betula nigra	8	Pond
Sassafras	Sassafras albidum	18	Section 4?
Serviceberry	Amelanchier arborea	16	Section 13
Shagbark Hickory	Carya ovate	26	Anniversary Tree
Shingle Oak	Quercus imbricaria	28	Section 11 near Prairie sign
Shortleaf Pine	Pinus echinata	25	Section 14
Silver Maple	Acer saccharinum	3	Section 17 Grass Commons
Slippery Elm	Ulm rubra	15	Section 12
Sugar Maple	Acer saccharum	1	Section 1
Swamp White Oak	Quercus bicolor	11?	Section 6 close to E pond sign

Plant List for Claire Gempp Davidson Conservation Area Front Gate Planting Project

Tulip Tree	Liriodendron tulipifera	5	Section 17 Grass Commons
White Oak	Quercus alba	27?	near Anniversary Tree
		22	near pond

Trees to be identified on map in the future

Flowering Dogwood	Cornus florida	Section 2
Fringe Tree	Chionanthus virginicus	Front Gate planting
Ozark Witch Hazel	Hammamelis vernalis	Section 2
Pawpaw	Asimina triloba	Section 2
Roughleaf Dogwood	Cornus drummondii	Front Gate planting

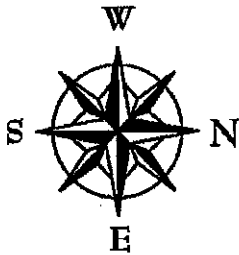
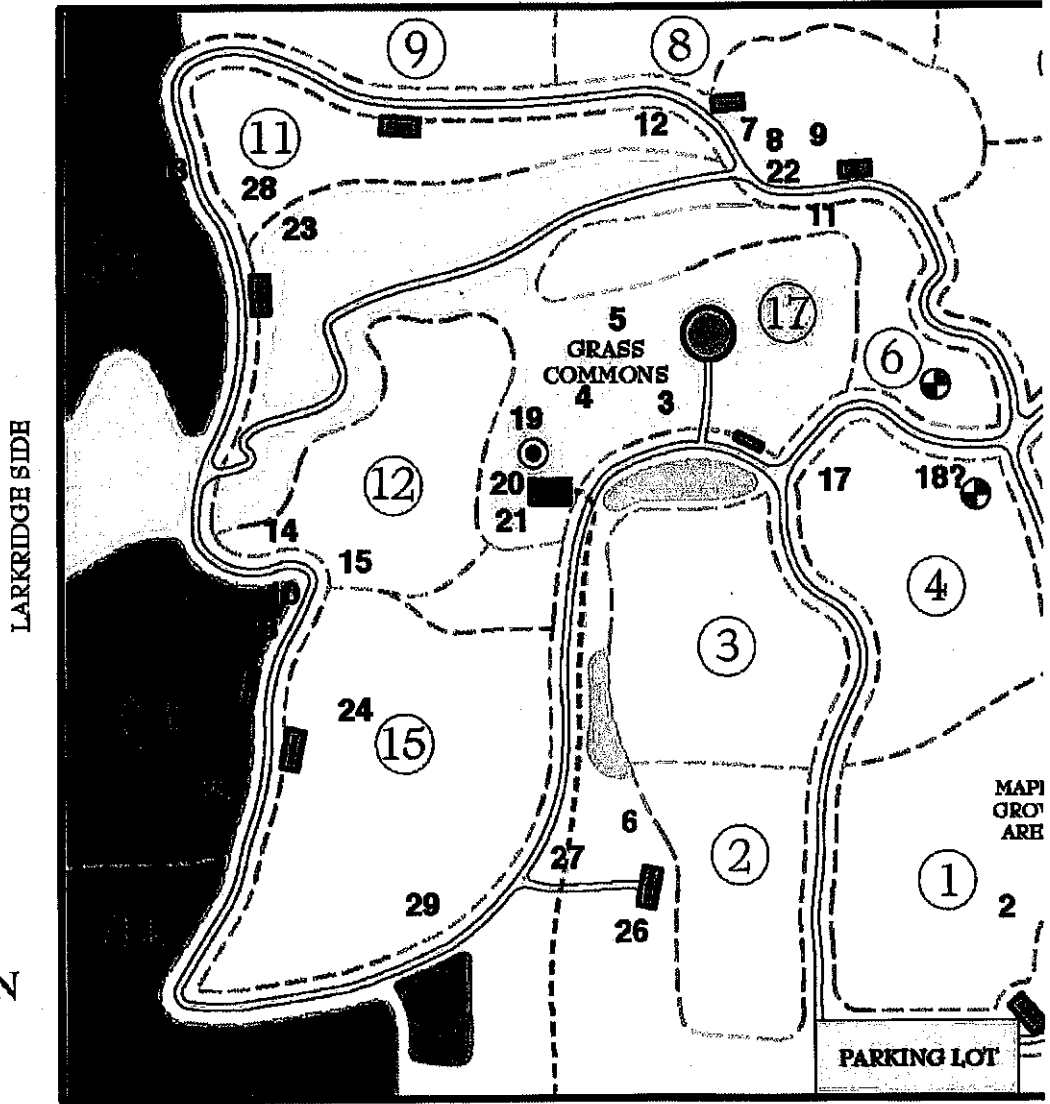
Notes:

Trees were identified during a tree identification walk thru Claire Gempp Davidson on 5/30/18, led by A

CLAIRE GEMPP DAY MEMORIAL CONSERVATION

CITY OF SUNSET HILLS, MISSOURI - 9225 SA

WEMBLEY WOODS SIDE



SAPPINGTON ROAD

Parks